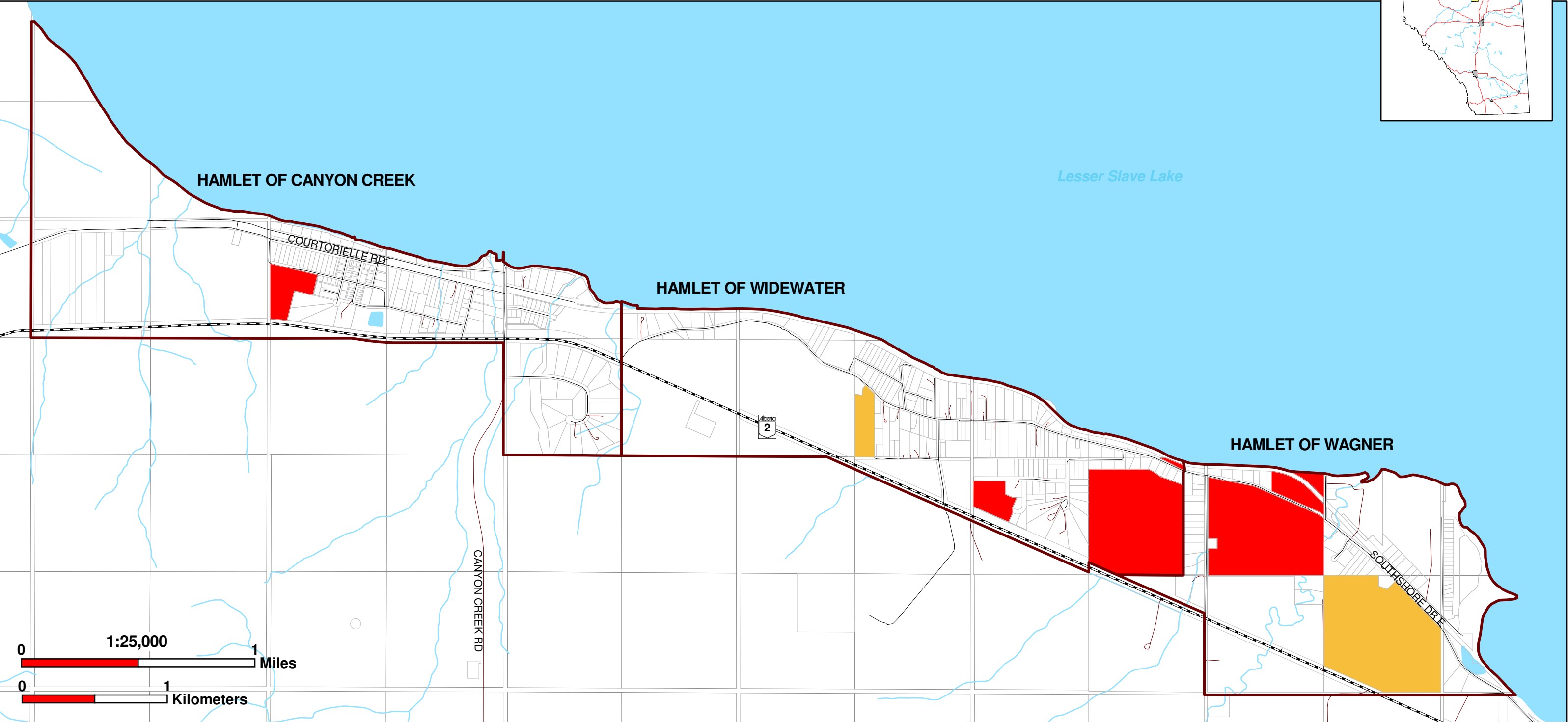
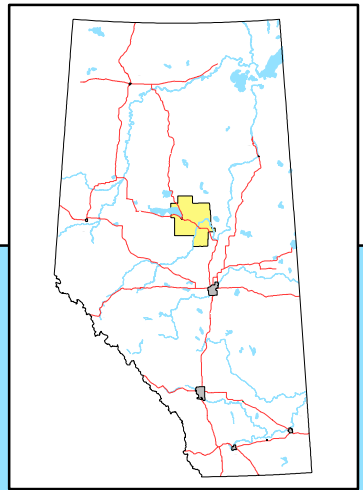




Southshore Development Opportunities

Municipal District of Lesser Slave River No. 124



Legend

	Provincial Road		Serviced Residential Under Construction
	Municipal Road		Vacant Multi Parcel Opportunity
	Private Road		Cadastre
	River		Hamlet Boundary
			Waterbody



"We focus on The Municipal User Experience with our integrated enterprise GIS solutions and innovative assessment services."

Map of Development Opportunities within the Municipal District of Lesser Slave River No. 124
SOUTHSHORE

P.O. Box 722
Slave Lake, Alberta T0G 2A0
Phone: 780.849.4888
Fax: 780.849.4939
Toll free: 1.866.449.4888
Website: www.md124.ca

The Municipal District of Lesser Slave River makes no representations or warranties regarding the information contained in this document, including, without limitation, whether said information is accurate or complete. Persons using this document do so solely at their own risk, and the Municipal District of Lesser Slave River shall have no liability to such persons for any loss or damage whatsoever.

This document shall not be copied or distributed to any person without the express written consent of the Municipal District of Lesser Slave River.

© 2014 Municipal District of Lesser Slave River. All Rights Reserved. **NOT RESPONSIBLE FOR ERRORS OR OMISSIONS**

Compiled from the Rural Cadastral Digital Base April 8, 2014 1:20,000 Digital Base.
Land Ownership derived from municipal tax data, April 8, 2014.
Building/Site/Feature information compiled from municipal assessment data, December 2012.

Projection: 10TM NAD83

Date: April 16, 2014