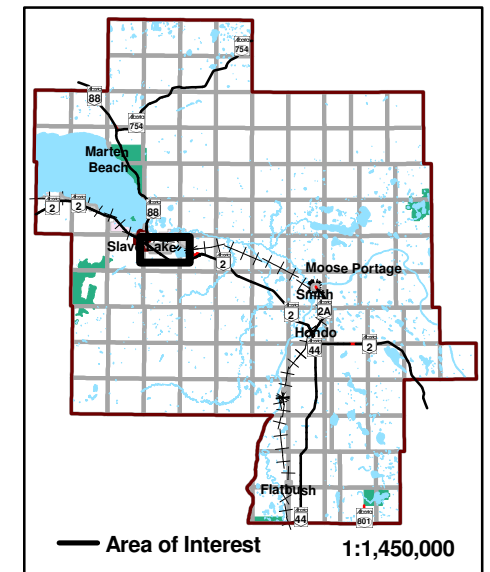
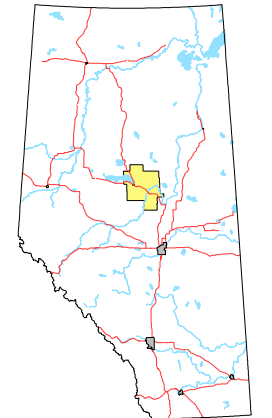
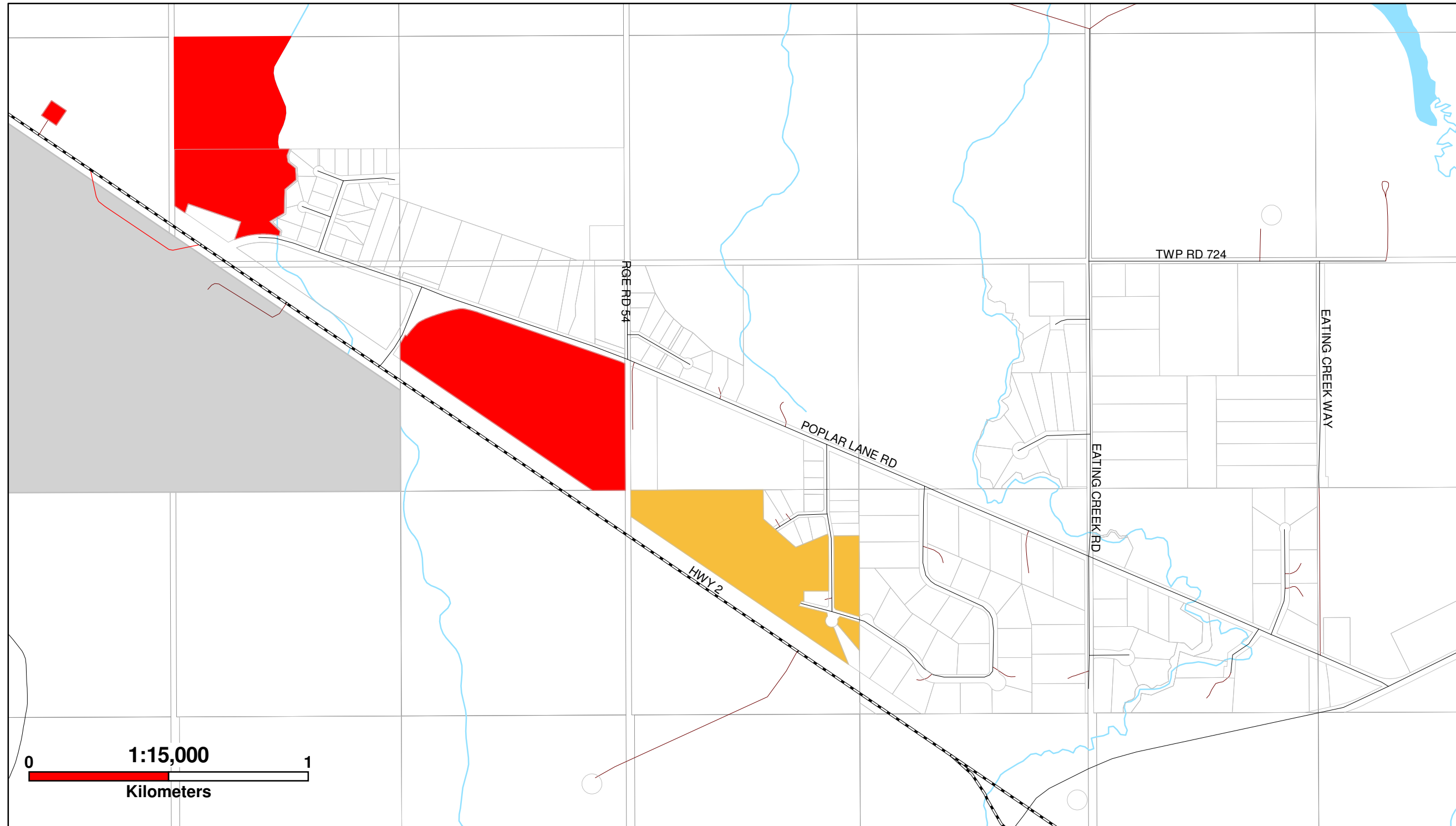


# Poplar Lane Development Opportunities

Municipal District of Lesser Slave River No. 124



Legend			
	River		Serviced Residential Under Construction
	Provincial Road		Vacant Multi Parcel Opportunity
	Municipal Road		Cadastré
	Private Road		Hamlet Boundary
	Town of Slave Lake		Waterbody

The Municipal District of Lesser Slave River makes no representations or warranties regarding the information contained in this document, including, without limitation, whether said information is accurate or complete. Persons using this document do so solely at their own risk, and the Municipal District of Lesser Slave River shall have no liability to such persons for any loss or damage whatsoever.

This document shall not be copied or distributed to any person without the express written consent of the Municipal District of Lesser Slave River.

© 2014 Municipal District of Lesser Slave River. All Rights Reserved. **NOT RESPONSIBLE FOR ERRORS OR OMISSIONS**

Compiled from the Rural Cadastral Digital Base April 8, 2014 1:20,000 Digital Base.  
Land Ownership derived from municipal tax data, April 8, 2014.  
Building/Site/Feature information compiled from municipal assessment data, December 2012.

Projection: 10TM NAD83      Date: April 16, 2014

**ACCURATE**  
ASSESSMENT GROUP LTD.

"We focus on The Municipal User Experience with our integrated enterprise GIS solutions and innovative assessment services."

Map of Development Opportunities within the Municipal District of Lesser Slave River No. 124  
**POPLAR LANE**

P.O. Box 722  
Slave Lake, Alberta T0G 2A0  
Phone: 780.849.4888  
Fax: 780.849.4939  
Toll free: 1.866.449.4888  
Website: www.md124.ca